

Vivid T8 Cardiovascular Ultrasound

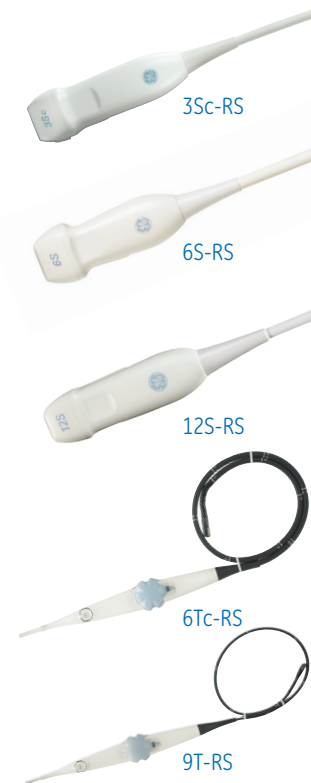
Transducer guide

Comprehensive cardiovascular scanning.

Vivid™ T8 features a wide range of applications that help increase the system's versatility. The system's transducers feature a miniaturized RS connector, that helps maximize ease of use and patient comfort. A lightweight transducer cable helps minimize strain for the user, facilitating transducer placement.



Cat #	Main Applications	Description	Footprint	Biopsy Guide	Scanner Frequency Range	Field of View	Depth of Field
Sector							
H45041DL	Adult Cardiac, Abdomen, Pediatric, Renal, Transcranial	Phased Array	18 x 24 mm	Multi-angle disposable, with a reusable bracket	1.3 - 4.0 MHz	120°	30 cm
H45021RP	Pediatric Cardiac, Neonatal Head, Fetal Heart, Abdomen	Phased Array	17 x 24 mm		2.0 - 8.0 MHz	120°	30 cm
H44901AB	Pediatric, Pediatric Abdomen, Coronary, Neonatal Head, Neonatal Abdomen, Carotid	Phased Array	13 x 18 mm		4.5 - 12.0 MHz	90°	20 cm
Transesophageal							
H45551ZE	Cardiac, Coronary	TEE	12 x 14 mm with length of 45 mm		3.0 - 8.0 MHz	90°	30 cm
H45531YM	Pediatric, Cardiac	TEE	8 x 11 mm with length of 35 mm		4.0 - 10.0 MHz	90°	14 cm



Cat #	Main Applications	Description	Footprint	Biopsy Guide	Scanner Frequency Range	Field of View	Depth of Field
Linear							
 L6-12-RS	H48062AC	Carotid, Thyroid, LEA, LEV, UEA, UEV, Small Parts, Pediatric Abdominal, Peripheral Vascular, Musculoskeletal Conventional	Linear Array	11 x 47 mm	Multi-angle disposable, with a reuseable bracket	4.0 - 13.0 MHz	38 mm 16 cm
 9L-RS	H40442LL	Carotid, Thyroid, Breast, LEA, LEV, UEA, UEV, Musculoskeletal, Small Parts	Linear Array	14 x 53 mm	Multi angle, reusable bracket, disposable sleeve	3.0 - 10.0 MHz	44 mm 16 cm
 12L-RS	H40402LY	Carotid, Thyroid, Breast, LEA, LEV, UEA, UEV, Musculoskeletal, Small Parts	Linear Array	13 x 47 mm	Multi angle and out-of-plane; reusable bracket, disposable sleeve	4.0 - 13.0 MHz	38 mm 12 cm
Convex							
 4C-RS	H4000SR	Abdomen, Pediatric, OB, GYN, Renal, Prostate	Curved Array	18 x 66 mm	Multi-angle disposable, with a reuseable bracket	1.8 - 6.0 MHz	55° 33 cm
 8C-RS	H40402LS	Pediatric Abdominal, Neonatal Head, Peripheral Vascular	Curved Array	12 x 22 mm		3.5 - 11.0 MHz	128° 20 cm
Doppler							
 P2D	H45551CA	Cardiac	Pencil Probe	16 mm		1.9 MHz	
Special							
 E8C-RS	H40402LN	Fetal Echo, Follicle, GYN, OB, Prostate, Transvaginal, Transrectal	Endo Micro Convex	17 x 21 mm	Fixed-angle, disposable	3.5 - 11.0 MHz	128° 20 cm
Intraoperative							
 L8-18i-RS	H40462LF	Musculoskeletal, small parts, peripheral vascular	Linear Array Probe	11 x 35 mm		4.5 - 18.0 MHz	25 mm 10 cm

Transducers

	3Sc-RS	6S-RS	12S-RS	6Tc-RS	9T-RS	9L-RS	12L-RS	L6-12-RS	L8-18i-RS	4C-RS	8C-RS	E8C-RS	P2D
Modes	2D	■	■	■	■	■	■	■	■	■	■	■	■
	Harmonics	■	■	■	■	■	■	■	■	■	■	■	■
	M-Mode	■	■	■	■	■	■	■	■	■	■	■	■
	AMM	■	■	■	■	■	■	■	■	■	■	■	■
	Curved AMM ³	■	■	■	■	■	■	■	■	■	■	■	■
	Color	■	■	■	■	■	■	■	■	■	■	■	■
	Angio ²	■	■	■	□	□	■	■	■	■	■	■	■
	AdvVascular (B-Flow, BFI) ²	■	■	■	□	□	■	■	■	■	■	■	■
	PW Doppler	■	■	■	■	■	■	■	■	■	■	■	■
	CW Doppler	■	■	■	■	■	■	■	■	■	■	■	■
	TVI ¹	■	■	■	■	■	■	■	■	■	■	■	■
	Strain ^{1,3}	■	■	■	■	■	■	■	■	■	■	■	■
	Strain Rate ^{1,3}	■	■	■	■	■	■	■	■	■	■	■	■
	TSI ^{1,3}	■	■	■	■	■	■	■	■	■	■	■	■
	Tissue Tracking ^{1,3}	■	■	■	■	■	■	■	■	■	■	■	■
	AFI ^{1,3}	■	■	■	■	■	■	■	■	■	■	■	■
	Auto2DEF ¹	■	■	■	■	■	■	■	■	■	■	■	■
	IMT ³	■	■	■	■	■	■	■	■	■	■	■	■
	LOGIQ View ³	■	■	■	■	■	■	■	■	■	■	■	■
	LVO Contrast ^{1,3}	■	■	■	■	■	■	■	■	■	■	■	■
Q Analysis ³	■	■	■	■	■	■	■	■	■	■	■	■	
Smart Stress ¹	■	■	■	■	■	■	■	■	■	■	■	■	
Virtual Convex	■	■	■	■	■	■	■	■	■	■	■	■	
Presets	Abdominal	■	■	■	■	■	■	■	■	■	■	■	■
	Adult Cephalic	■	■	■	■	■	■	■	■	■	■	■	■
	Cardiac	■	■	■	■	■	■	■	■	■	■	■	■
	Fetal/Obstetrics	■	■	■	■	■	■	■	■	■	■	■	■
	Gyn	■	■	■	■	■	■	■	■	■	■	■	■
	Musculo-Skeletal	■	■	■	■	■	■	■	■	■	■	■	■
	Neonatal Cephalic	■	■	■	■	■	■	■	■	■	■	■	■
	Pediatrics	■	■	■	■	■	■	■	■	■	■	■	■
	Peripheral Vascular	■	■	■	■	■	■	■	■	■	■	■	■
	Small Organs	■	■	■	■	■	■	■	■	■	■	■	■
	Transvaginal	■	■	■	■	■	■	■	■	■	■	■	■
	Transrectal	■	■	■	■	■	■	■	■	■	■	■	■
	Urological	■	■	■	■	■	■	■	■	■	■	■	■

- Not supported on this probe
- Supported on this probe

¹Only for cardiac applications/preset

²Only for non-cardiac applications/preset

³Probe or feature not available for the Pro version

About GE Healthcare

GE Healthcare provides transformational medical technologies and services to meet the demand for increased access, enhanced quality and more affordable healthcare around the world. GE (NYSE: GE) works on things that matter - great people and technologies taking on tough challenges. From medical imaging, software & IT, patient monitoring and diagnostics to drug discovery, biopharmaceutical manufacturing technologies and performance improvement solutions, GE Healthcare helps medical professionals deliver great healthcare to their patients.

GE Healthcare
9900 Innovation Drive
Wauwatosa, WI 53226
USA
www.gehealthcare.com

Note: Some applications depend on the availability of certain options.
Note: Some of the probes, options or features described in this data sheet may NOT be available for sale in all countries.

©2017 General Electric Company.

General Electric Company reserves the right to make changes in specifications and features shown herein, or discontinue the product described at any time without notice or obligation.

This does not constitute a representation or warranty or documentation regarding the product or service featured. The results expressed in this document may not be applicable to a particular site or installation and individual results may vary. This document and its contents are provided to you for informational purposes only and do not constitute a representation, warranty or performance guarantee from GE Healthcare.

GE, GE Monogram, and Vivid are trademarks of General Electric Company or one of its subsidiaries.

GE Medical Systems Ultrasound & Primary Care Diagnostics, LLC, a General Electric Company, doing business as GE Healthcare.

