

GE Healthcare

Vivid 7 Dimension '08

Cardiovascular ultrasound system

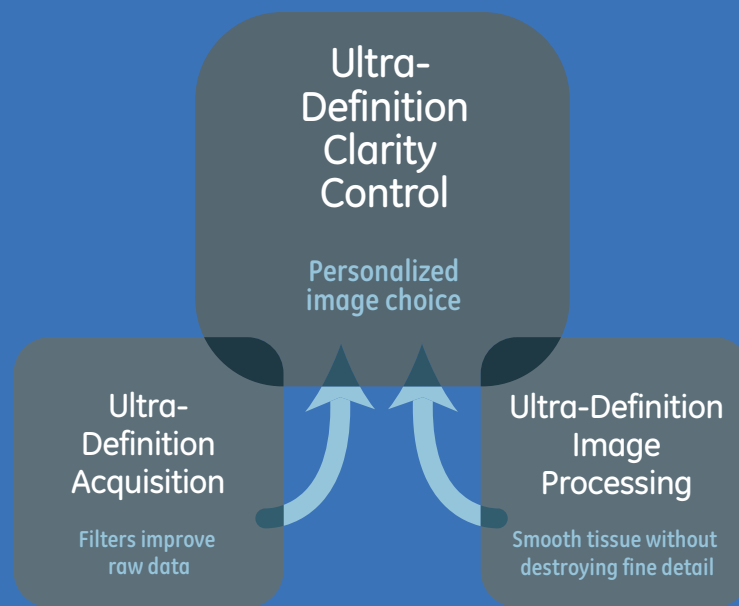


Ultrasound



Definition. Technology. Performance.

Start with a system that's proven its worth in LV quantification and 4D imaging. Then add even more value through enhanced image quality, new breakthroughs and shared-service capabilities. That's the distinct advantage of a Vivid 7 cardiovascular ultrasound system.



Improved image quality. Dependable performance as always. Vivid 7 brings you the best of both worlds.

New Ultra-Definition Imaging combines image acquisition and processing technology to take imaging to the next level, for an optimal image with one button control.

The new Ultra-Definition Clarity Control feature provides you with multiple 2D settings that reduce noise, while still keeping image edges smooth. It enables image personalization for 4D, cardiac and vascular imaging.

We've also added new 4D visualization tools with Stereo and Depth Color Render maps to provide a better understanding of 4D anatomy and volume. Our 4D LV volume tool, previously an option with EchoPAC™, is now integrated right into the Vivid 7 system to easily quantify volume information. You can also assess the left ventricle free of geometric assumptions – in less than a minute.

You can rely on Vivid 7's well-established platform day in and day out. It's a flexible system that easily handles upgrades and shared services, in addition to a reporting package with structured findings that helps drive workflow and productivity.

Breakthrough ultrasound technology backed by proven clinical reliability. You can depend on it.



Real time. Real solutions. Real value.

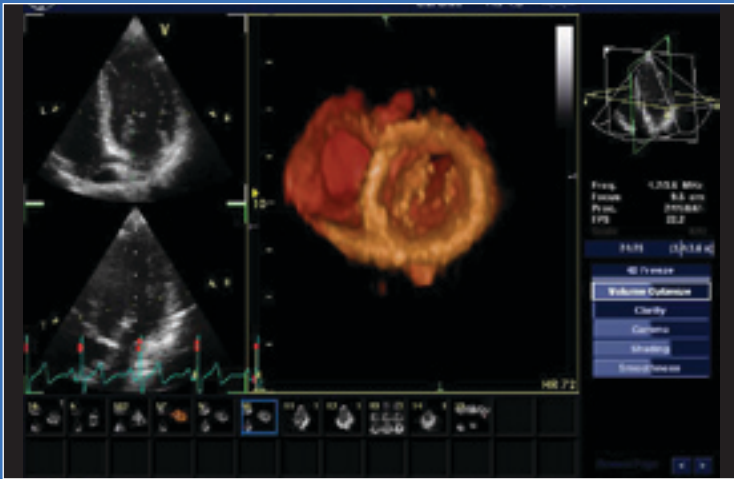
The Vivid 7 delivers the real-time, 4D imaging that you've always dreamed of. And it's easier than ever to use. Just the push of one button instantly displays a live full volume image of the beating heart. Finally, technology that was once reserved for the research lab now helps you deliver better patient care in a clinical setting.

Excellent 4D imaging is now available in an easy-to-use package with faster results in fewer steps. Just one button and the full volume image of the heart is displayed and ready for assessment.

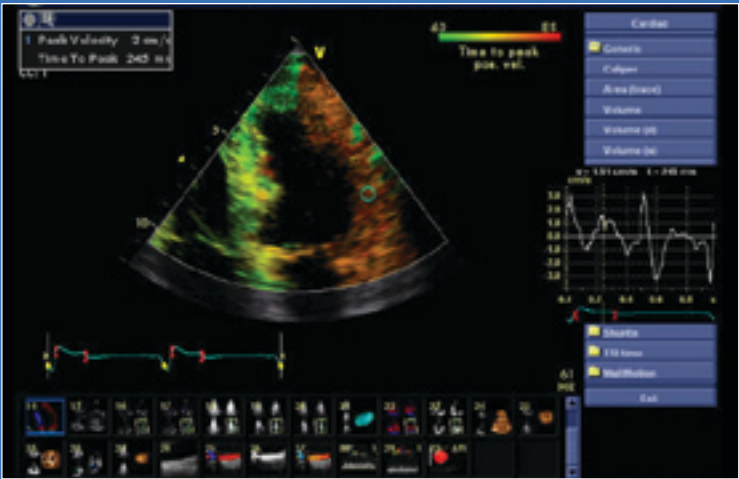
With Vivid 7's onboard 4D LV volume tool, your level of care quickly improves through additional quantitative information of both volume and ejection fraction – providing a higher accuracy than standard 2D imaging.

Our creative multi-dimensional formats clearly convey cardiac anatomy, synchronicity and viability. You get 4D images rendered online that look like an actual heart. And, the new 4D visualization tools offer you a new perspective on volume and dimension with the assistance of Depth Color Rendering and Stereo glasses – making it look real enough to touch.

Incredibly detailed. Remarkably life-like. Ask your GE sales representative for a demonstration.

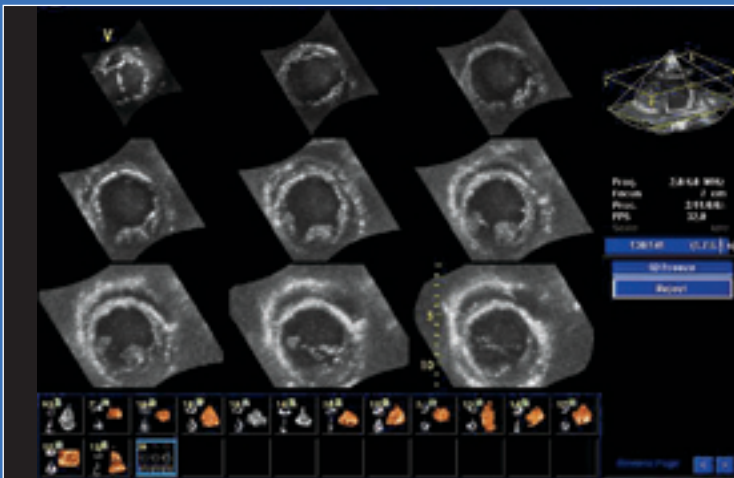


4D
 4D depth color render. Two depth color render maps enhance depth perception in any 4D image.

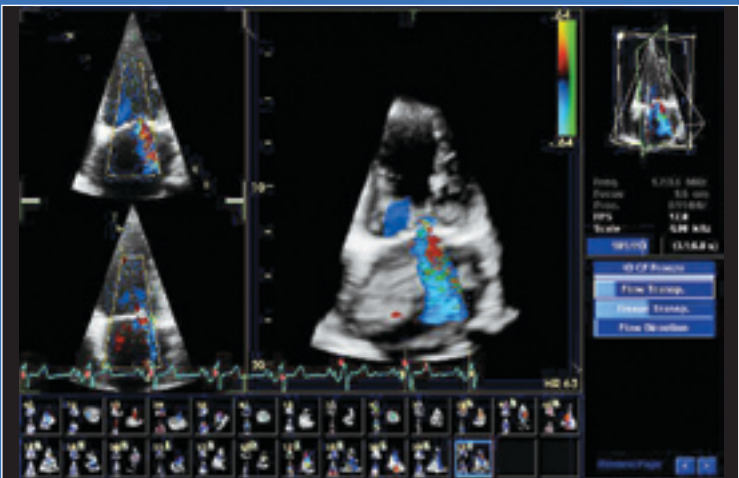


Advanced TSI
 Advanced Tissue Synchronization Imaging (TSI) provides quantification of LV synchronicity information. Time-to-peak data is derived from the simple-to-use “red light/green light” visualizations.

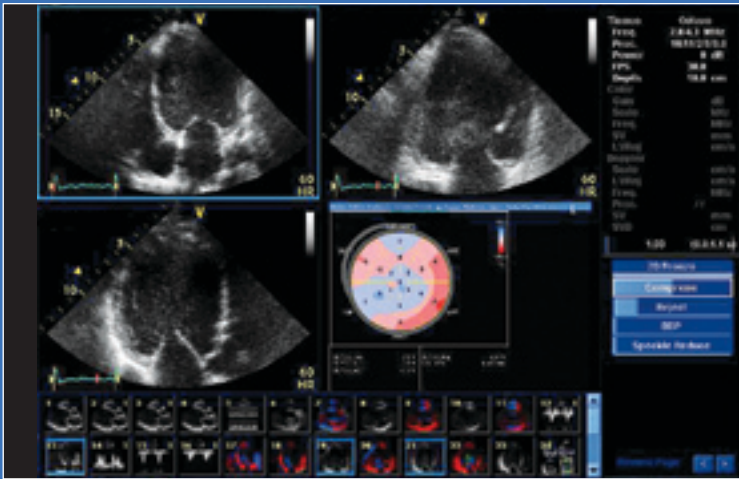
Ultrasound in full measure.



9-slice
 See regional wall motion in a whole new way by slicing the left ventricle of a 4D full-volume dataset into nine equidistant short-axis views.

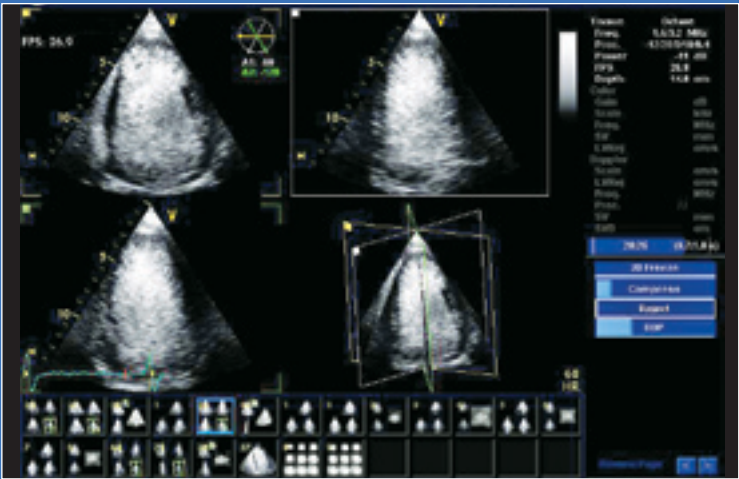


Real-time Color Flow Full Volume
 Assess hemodynamic information in color, in real time, in the same heart cycle. You also have the option of viewing a 6-slice cross-section of the left ventricle.



Cutting-edge AFI

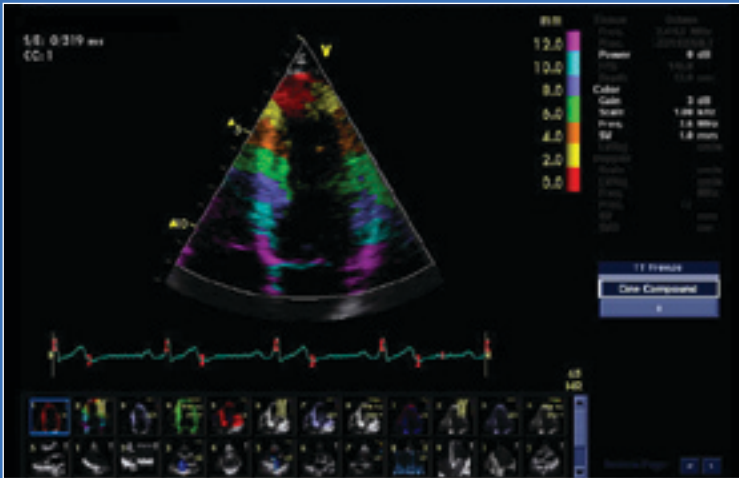
Assessing and quantifying left ventricle wall motion is easy with our Automated Function Imaging (AFI) tool, which delivers reproducible, systolic, segmental and global assessments quickly and accurately. New simplified workflow with quick tips, and an adaptive ROI provide more robust and reproducible results for the non-expert, improving speed and confidence in understanding LV function.



Contrast Imaging

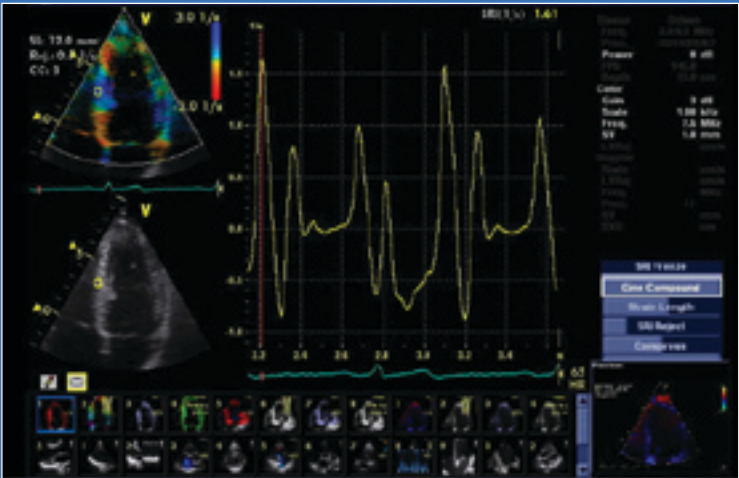
Get enhanced visualization of the LV border for wall-motion analysis and ejection fraction calculations in multi-dimensional and 4D full-volume imaging.

With Vivid 7, you get reliable quantitative application tools that provide accurate, detailed information and analysis – helping take the uncertainty out of ultrasound imaging.



TT

Tissue Tracking provides easy recognition of regional and global wall left ventricular relaxation motion abnormalities.



SRI

Strain Rate Imaging evaluates ischemic heart disease and true analysis of a specific piece of the myocardium.

The system



With your ever-growing need for shared-service equipment, Vivid 7 is a smart choice. In fact, with its diverse capabilities, it may well become the most popular member of your facility.

that shares.



From cardiac, to vascular and pediatric exams, Vivid 7 is versatile enough to share. Its innovative processing techniques and diverse application tools ensure excellent image quality and enhance diagnostic confidence throughout a broad range of studies.

- Multiple-angle compound imaging enhances border definition, reduces acoustic artifact and improves contrast resolution, now available in color flow mode, providing consistent image quality for both the 2D and color image.



- Blood Flow Imaging (BFI) gives a better understanding and delineation of directional blood flow in vessels.
- IMT measuring technology dramatically reduces the time it takes to measure the carotid artery's intima-media thickness.
- TEE transducers address perioperative needs for adult and pediatric monitoring.

Information. Quick and customized.

Our flexible reporting package lets you choose the configuration that works best for you – giving you complete exam data and accurate analysis efficiently.

Increase productivity with easy-to-use reporting features, set up to best suit your individual workflow needs. The result: information organized just the way you like it.

- Edit the finding text and conclusion section in a way that's compatible with your workflow.
- Fast pull-down menus help you automatically sort and insert information.
- Customizable normal report values let you define measurement values.
- MPEGvue allows you to export more compressed studies.
- eVue simplifies PC setup for remote interactive image monitoring.
- DICOM connectivity, with embedded raw-data storage, permits post-exam quantitative analysis on the system or the EchoPAC Dimension workstation.
- Structured findings report capabilities for all applications.



©2007 General Electric Company – All rights reserved.

GE Medical Systems Ultrasound & Primary Care Diagnostics, LLC,
a General Electric company, doing business as GE Healthcare.

General Electric Company reserves the right to make changes in
specifications and features shown herein, or discontinue the product
described at any time without notice or obligation. Contact your
GE representative for the most current information.

GE, GE Monogram, Vivid™, and EchoPAC™ are trademarks
of General Electric Company.

Healthcare Re-imagined

GE is dedicated to helping you transform healthcare delivery by driving critical breakthroughs in biology and technology. Our expertise in medical imaging and information technologies, medical diagnostics, patient monitoring systems, drug discovery, and biopharmaceutical manufacturing technologies is enabling healthcare professionals around the world to discover new ways to predict, diagnose and treat disease earlier. We call this model of care “Early Health.” The goal: to help clinicians detect disease earlier, access more information and intervene earlier with more targeted treatments, so they can help their patients live their lives to the fullest.

Re-think, Re-discover, Re-invent, Re-imagine.

GE Healthcare
9900 Innovation Drive
Wauwatosa, WI 53226
U.S.A.

www.gehealthcare.com



imagination at work