

GE Healthcare

LOGIQ P6 Pro

Proficient Ultrasound



Agile performance

Exceptional imaging power. A portable package. Offering full shared service capabilities from radiology to cardiology. The LOGIQ® P6 Pro is the pure essence of performance, ergonomics and economy in one system.



It's big on service and support, too

LOGIQ P6 Pro may come in a small package, but nothing was overlooked. It comes complete with the reassurance that you'll have all the service and support you need, when you need it, through:

- In-depth, on-site applications training.
- One of the industry's best-trained and most widely deployed ultrasound service teams.
- A certification program that gives field engineers professional development and productivity skills to better service your systems.



Advanced technology and imaging power

Clear images lead to the most confident decisions. That's why LOGIQ P6 Pro is designed using innovative leadership technologies from GE Healthcare, including an enhanced beamformer for deeper penetration and higher resolution while maintaining fast frame rates. You'll find these advancements in imaging and more:

Speckle Reduction Imaging (SRI)

Heighten your visibility of organs and lesions with high-definition contrast resolution that suppresses speckle artifact while maintaining true tissue architecture.

CrossXBeam™

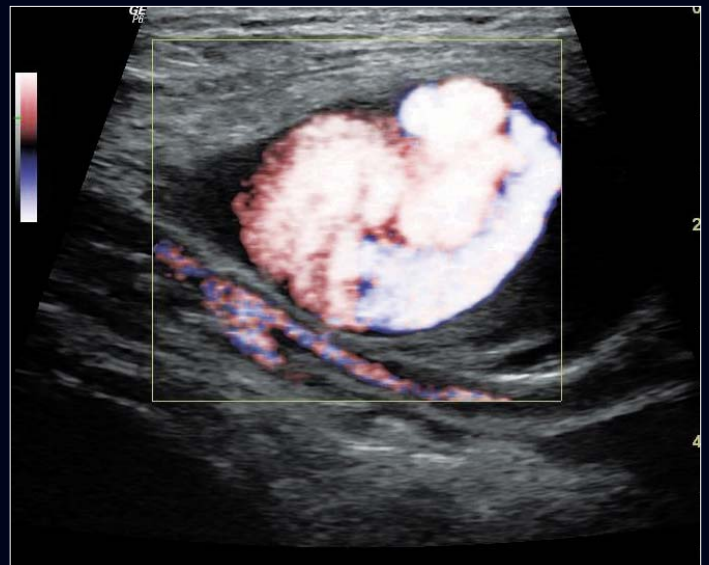
Enhance tissue and border differentiation with real-time spatial compounding acquisition and processing.

DualBeam

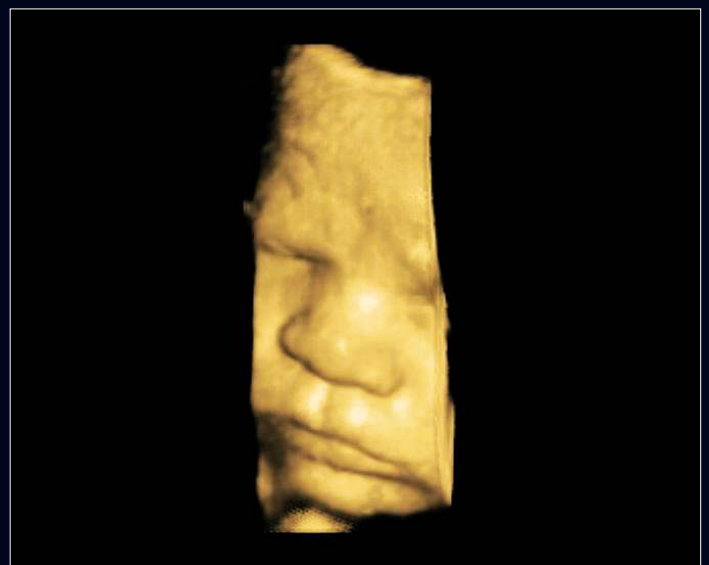
Achieve high frame rates without sacrificing spatial resolution. You can maximize this balance even in difficult studies, in which patients are unable to hold their breath during an abdominal Doppler exam, and increased frame rate is needed.

B-Flow

Achieve superb temporal and spatial resolution when scanning vessels by directly imaging blood reflectors. This helps you see hemodynamics in great detail, so you can distinguish more easily between different flow variations. At the same time, B-Flow enables you to maintain high frame rates for superior vessel-wall definition.



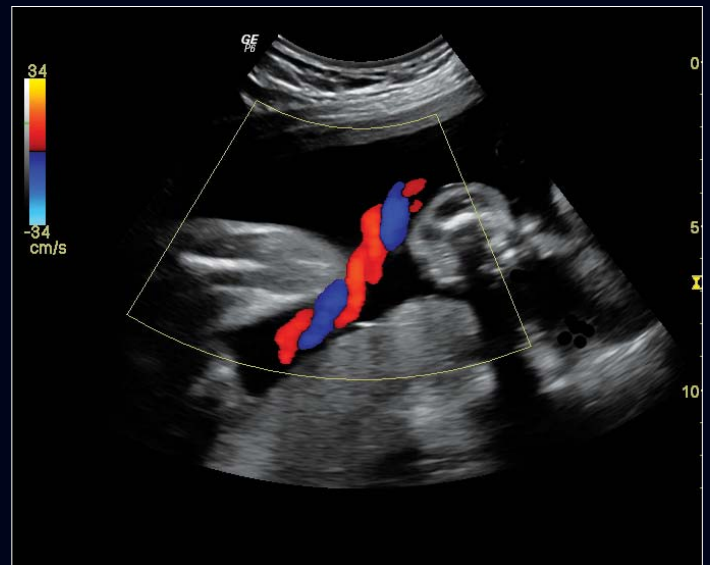
Pseudo Aneurysm from punctured femoral artery using 9L transducer with virtual convex and B-Flow color imaging.



3D rendered fetal face using 4D5C-L transducer with SRI imaging.



Portal vein of the liver using 4C transducer with CrossXBeam and color Doppler imaging.



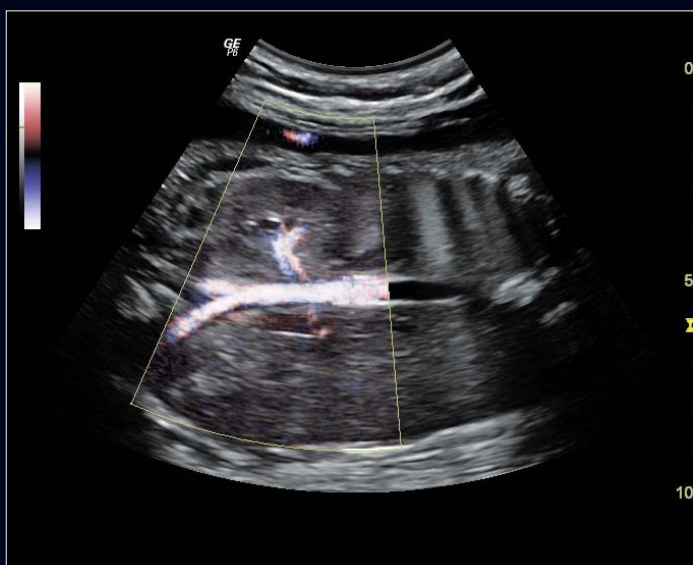
3 vessel cord using 4C transducer with CrossXBeam,harmonic and color Doppler imaging.



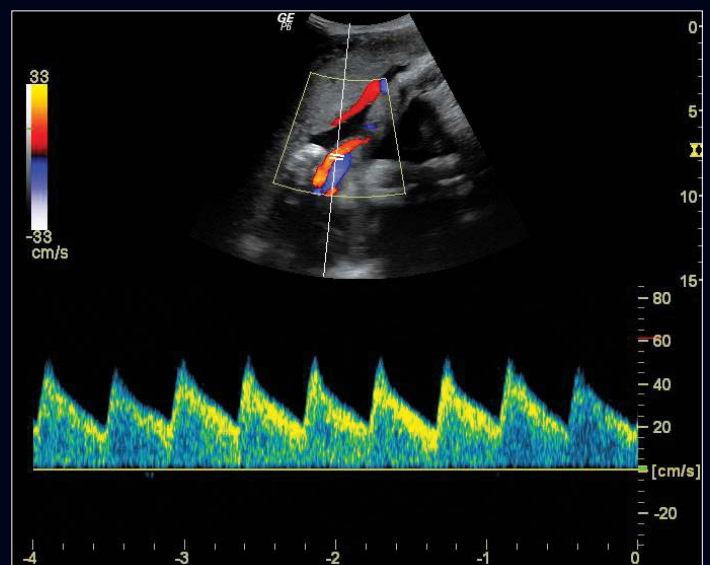
Cirrhosis of liver with cholelithiasis using 4C transducer with harmonic imaging.



Parasternal LAX view of the heart using 3Sp transducer with harmonic imaging.



Fetal aorta with kidney vessels using 5CS transducer with CrossXBeam, harmonic and B-Flow color imaging.



Umbilical artery using 5CS transducer with CrossXBeam, harmonics, color and pulse wave color Doppler.

Perform more exams with

Thanks to leading edge technologies and tools for a variety of different applications, the LOGIQ P6 Pro opens up broad new opportunities for you in general imaging as well as in special applications.

Advanced transducer technologies, such as single-crystal, real-time 4D, and bi-plane trans-rectal transducers, enable you to cover more applications with ease and confidence.



Maximize productivity with portability

With its surprisingly light weight and small footprint, LOGIQ P6 Pro offers the agility to easily move to the patient's bedside and into tight spaces. The 17" glare-free monitor on an articulating arm allows you to effortlessly glide the screen into the best viewing position, minimizing eyestrain throughout a long day of scanning.



out compromise

Full shared services - The wide range of probes and advanced cardiac capabilities such as Tissue Velocity Imaging make the LOGIQ P6 Pro a truly versatile ultrasound system.

Single-crystal transducers offers ultra-wide bandwidth and excellent Doppler sensitivity. Single-crystal transducers deliver exceptional cardiac performance, even on the most difficult patients.

Real-time 4D imaging provides the power to acquire and construct volumetric images, displaying multi-planar anatomical views not otherwise visualized.

Easy portability - LOGIQ P6 Pro is an ergonomically designed system, small enough to fit into any scan room, but robust enough to easily travel to your destination with minimum effort. This versatility makes it easy for you to scan patients anywhere.

A heritage of breakthroughs - The LOGIQ P6 Pro offers the same proven, innovative technology found in our flagship ultrasound systems, including raw-data capability for optimum flexibility during post-processing and analysis.



© 2009 General Electric Company - All rights reserved.

GE Medical Systems Ultrasound & Primary Care Diagnostics, LLC, a General Electric company, doing business as GE Healthcare.

General Electric Company reserves the right to make changes in specifications and features shown herein, or discontinue the product described at any time without notice or obligation. Contact your GE representative for the most current information. GE, GE Monogram, LOGIQ and CrossXBeam are trademarks of General Electric Company.

DICOM is a registered trademark of the National Electrical Manufacturers Association for its standards publications relating to digital communications of medical information.

UNITED KINGDOM

GE Medical Systems Ultrasound
2, Napier Road
Bedford MK41 0JW
T 44 1234 340881
F 44 1234 266261

EUROPE

GE Ultraschall Deutschland GmbH
Beethovenstr. 239, 42655 Solingen
Germany
T 49 212-28 02-0
F 49 212-28 02 28

AMERICAS

GE Healthcare
9900 Innovation Drive
Wauwatosa, WI 53226
U.S.A.
T 1 888 202 5582

ASIA

GE Healthcare Clinical
Systems ASIA
1105-1108 Maxdo Center
8 XingYi Road, Shanghai
200336
T 86 21 5257 4640
F 86 21 5208 0582

Healthcare Re-imagined

GE is dedicated to helping you transform healthcare by driving critical breakthroughs in biology and technology. Our expertise in medical imaging and information technologies, medical diagnostics, patient monitoring systems, drug discovery, and biopharmaceutical manufacturing technologies is enabling healthcare professionals around the world to discover new ways to predict, diagnose and treat disease earlier. We call this model of care "Early Health". The goal: to help clinicians detect disease earlier, access more information and intervene earlier with more targeted treatments, so they can help their patients live their lives to the fullest.

Re-think, Re-discover, Re-invent, Re-imagine.

www.gehealthcare.com



GE imagination at work